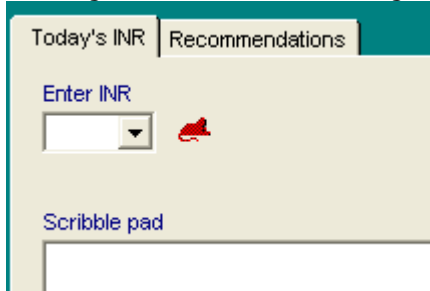


RAT v3.704 Latest release: IMPORTANT INFORMATION

'Mechanical Valve Replacement'

In RAT, you can customize INR reference ranges for individual patients. One of the commonest indications where this happens is with 'Mechanical Valve Replacement'. The recommended default range is '3.0-4.0'. Some hospitals have a variety of ranges for different types of artificial heart valves varying from 2.0-2.5 to 2.5-3.5. Most practices would probably choose the local recommendation for the INR range from the local cardiac surgeon.



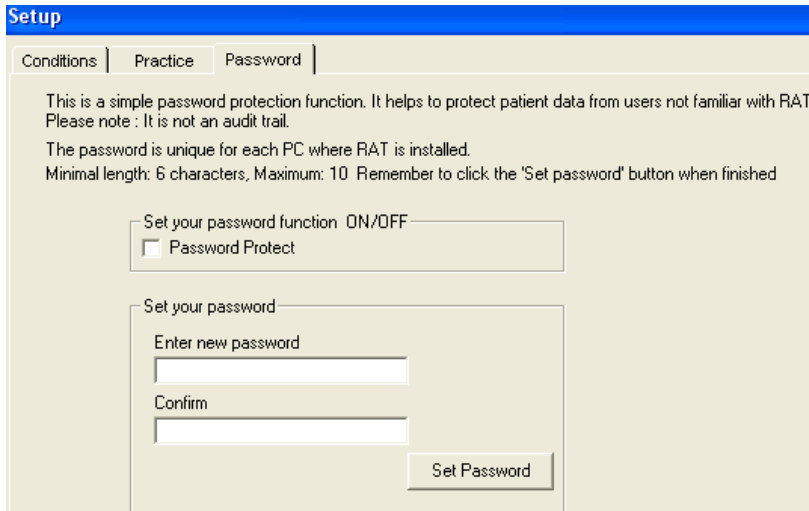
Within RAT, when you customise a range you will see a 'RED RAT' icon beside the INR input box. This is to bring to your attention that the INR reference range for this patient is different from the default. (SEE OPPOSITE)

In the previous version, when you clicked this 'RED RAT' the 'Indication' screen would appear and the INR reference range will be changed to the default set-up INR range. To accept this change to the default range the user would click OK. To keep the customised range the user would have clicked 'Cancel'.

To prevent users accidentally clicking OK, the latest version (v3.704) does not set the INR reference range to the default range. This has to be done manually if needed.

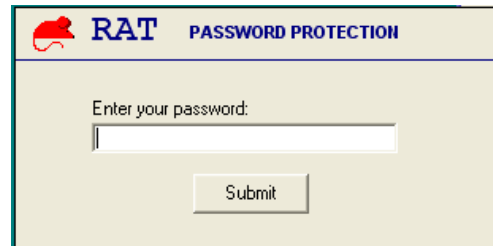
It is also recommended you check your patients have the correct INR reference range for 'Mechanical Valves'.

Password Protection



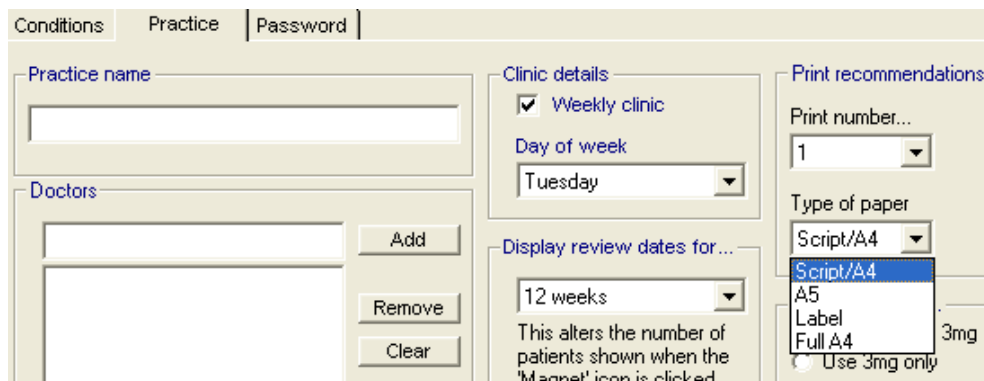
RAT now has a password facility. Go to 'Setup'. You will now see a third tab called 'Password'. (SEE OPPOSITE)

To activate the password, Click the 'Password Protect' button, and then enter your preferred password. Then click the 'Set Password' button. The next time you start RAT you will see the screen below appearing...

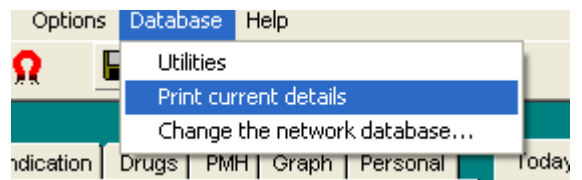


Print Options

There are now 4 print options in RAT. Go to the 'Setup' screen to see the settings. Try out each one...



Within a patient record you can also print out all the patient details and the INRs over the last 12 months by selecting the 'Print Current details' from the top menu (SEE BELOW) This is useful if a patient is leaving the practice or going to a hospital outpatients.

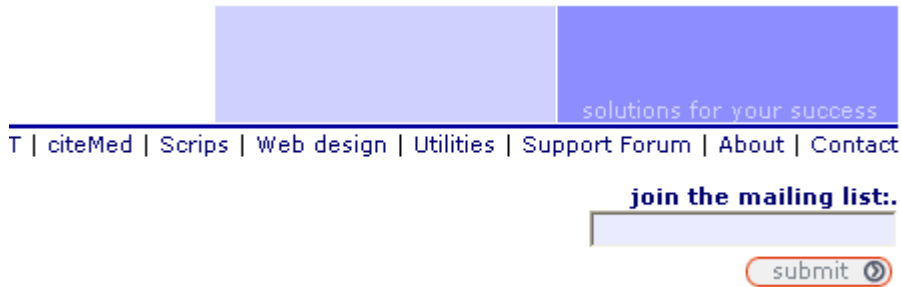


Join the Mailing List To Get Notification of Future Updates

To automatically get the latest information about RAT I recommend joining the mailing list by submitting your email address on the home page of the website: www.formulae.com (SEE BELOW)

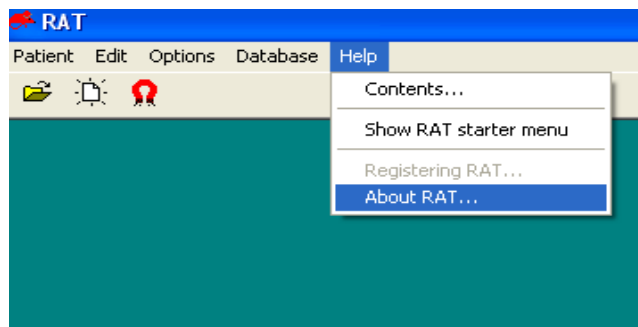
If successful you will automatically get an email confirming that you have been added to the list.

N.B: The mailing list it is default way of communicating with users.



Checking Your Version of RAT

To make sure you have the latest version of RAT, go to the top menu, choose 'About RAT' (SEE BELOW)



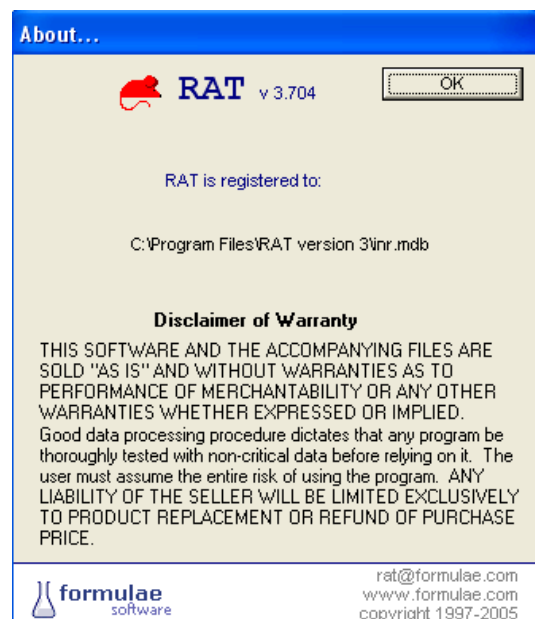
A screen will appear (SEE OPPOSITE). It will give you the version of RAT. In this case it is **v3.704**.

You will also see a path:

C:\Program files\Rat version 3\inr.mdb

This shows you where the database file (INR.MDB) is stored.

Practices that network RAT may have a different path.



IMPORTANT INFORMATION ON UPDATING RAT

INSTRUCTIONS FOR UPDATING RAT

Make sure RAT is not running.

Go to on the link below

http://www.formulae.co.uk/Rat_update.exe

Once downloaded, double click this file.

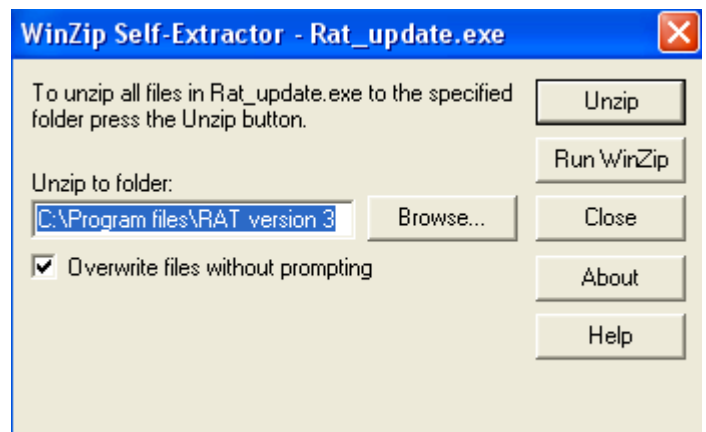
A window will appear (SEE OPPOSITE)

Click 'Unzip'

Close this window

Restart RAT.

8. Check your update was successful by following the instructions above: **Checking Your Version of RAT**



- 1.
- 2.
- 3.
- 4.
- 5.
- 6.
- 7.

N.B. Some practices have RAT networked, i.e. RAT running on more than one PC.

It is important for those practices than you run the latest RAT update on ALL the PCs that have RAT installed